



**CUBRO**  
NETWORK VISIBILITY

# Centralized Management System - Cubro Vitrum



Product Brief

July 2024



## Introduction

Vitrum is Cubro’s centralized management platform, delivering a coveted „single pane of glass“ interface for overseeing Cubro devices. This platform enhances network team efficiency through a comprehensive suite of features for management, monitoring, and alerting within a unified, multi-user application. Vitrum includes robust capabilities such as asset discovery and inventory management, streamlining these tasks even as network infrastructures expand.

Cubro Vitrum graphically displays traffic parameters over time for faster troubleshooting. Easily compare traffic indicators from various sources to swiftly identify and resolve issues like packet loss, ensuring accurate data delivery to your monitoring systems.

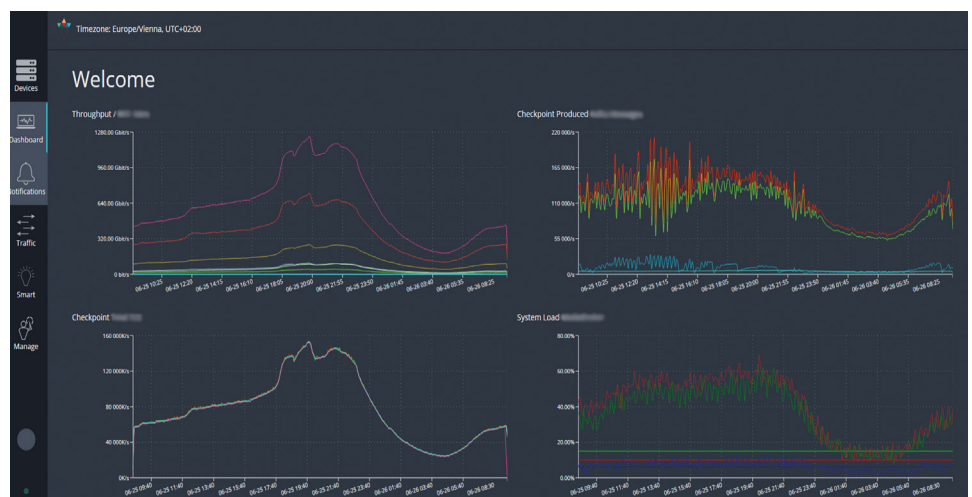
Experience automatic 24/7 health monitoring of your network packet brokers. Detect performance degradation or hardware issues at the earliest possible moment, eliminating the need for cumbersome and costly SNMP tools.

Moreover, Vitrum offers a centralized repository for one-click configuration backups and deployments, along with scheduled firmware upgrades. This significantly reduces device provisioning time and minimises downtime during maintenance windows.

Vitrum equips network administrators with powerful tools to efficiently manage and optimise Cubro devices, ensuring streamlined operations and proactive network management.

## Key Highlights of Vitrum

- Centralized management platform for network visibility solutions
- Inventory database
- Batch backup and restore
- Easier troubleshooting via SmartViews
- Visually extract relevant information
- Reduce monitoring costs
- Customizable counter and statistics visualizations
- Error notifications
- Instant remote collaboration





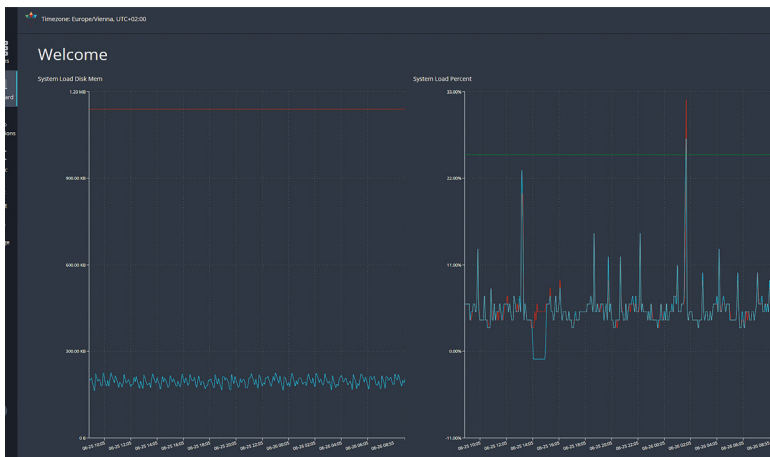
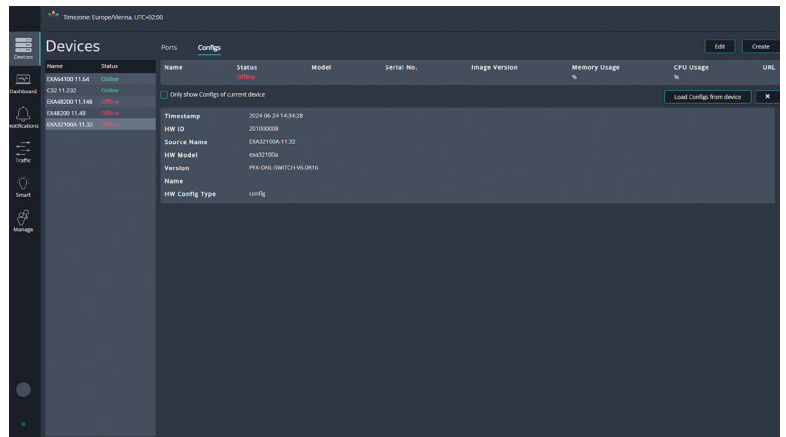
## Main Features and Benefits

### Inventory Database

Cubro Vitrum effortlessly simplifies device tracking. Forget about memorising IP addresses—simply access each device’s management website with a single click. Devices and ports can be easily named and annotated, providing clear visibility into each network equipment’s role.

### Batch Backup

Configuration backups for all Cubro Network Packet Brokers can be initiated with a single click. These backups can then be swiftly transferred to other devices, facilitating quick device cloning or preparation of backup devices.

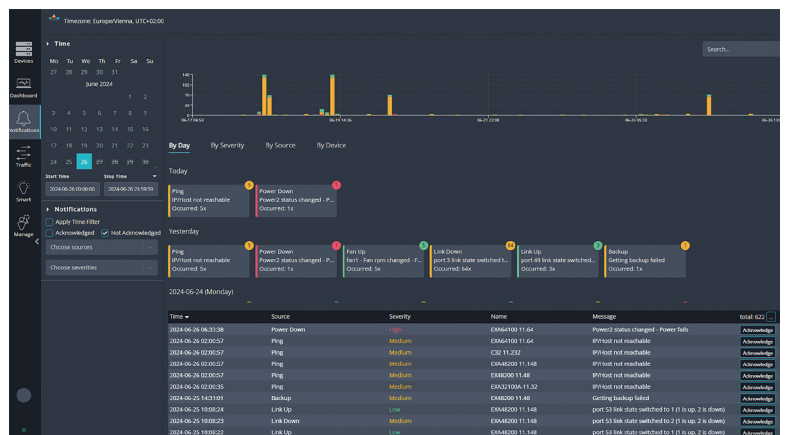


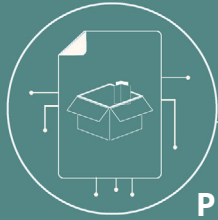
### Statistics and Dashboards

Cubro’s innovative “SmartViews” enable the creation of customised dashboards tailored to display pertinent information. Whether comparing ingress port counters to aggregated egress counters for packet loss analysis or calculating bandwidth gaps across multiple monitoring systems, the tools are readily accessible.

### Error Center & Notifications

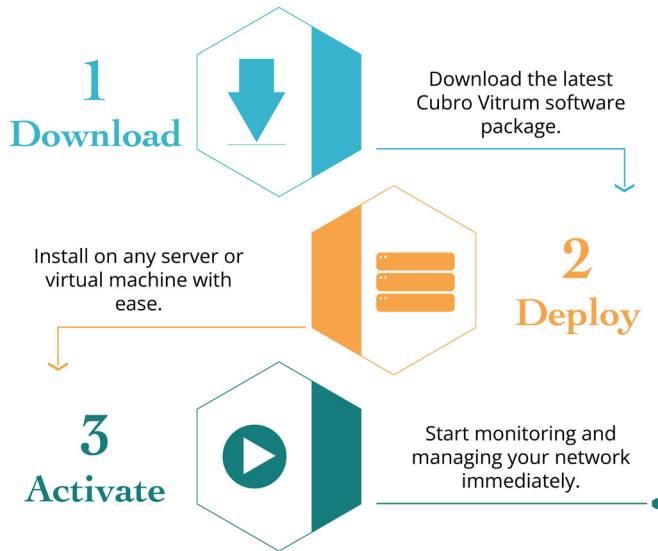
The error centre consolidates error events (e.g., device offline, port down) and issues on-page notifications for immediate attention. It maintains a comprehensive log of all historical events for linked devices.





### Real-time collaboration

Cubro Vitrum supports simultaneous usage by multiple users, ensuring instant visibility of actions across all users.

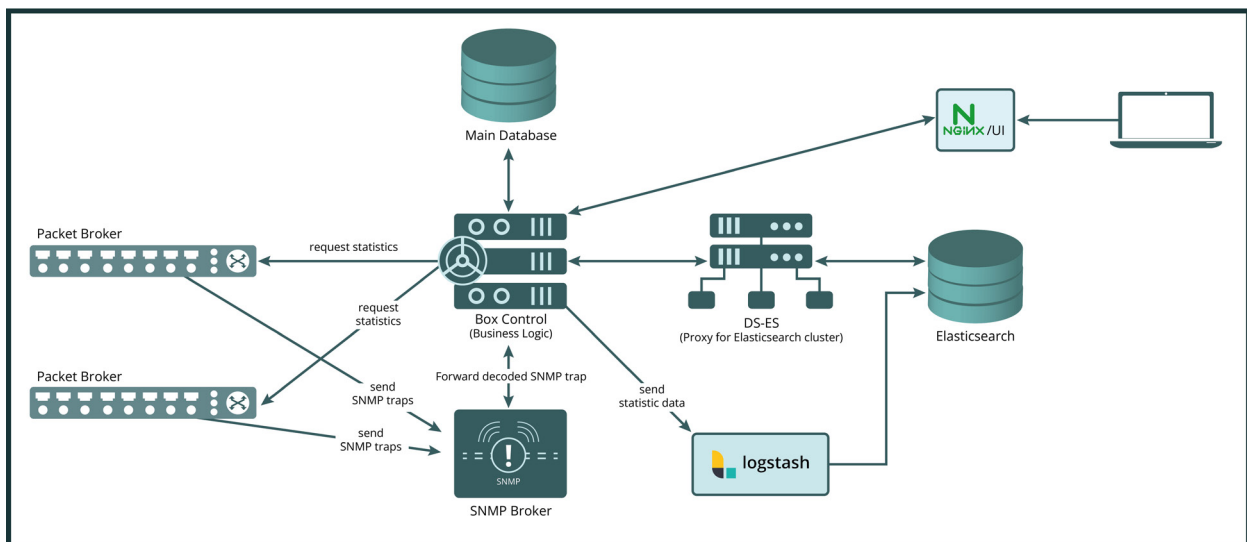


**Deployment via docker container**  
Cubro Vitrum is packaged as a deployable container. It can be seamlessly integrated into existing host systems for immediate deployment and utilisation.

### Modular and scalable software design

Cubro Vitrum is engineered with a modular and scalable architecture. Should a single host's performance prove insufficient, Vitrum can be partitioned and distributed across multiple servers to enhance scalability and performance.

### Logical Architecture



For more information or to request a free demo, please contact [support@cubro.com](mailto:support@cubro.com).